



# AGROECOLOGICAL CROP PROTECTION TO MEET FUTURE CONSUMER DEMANDS

## A LIGHTER TOUCH



Ministry for Primary Industries  
Manatū Ahu Matua





## A LIGHTER TOUCH

**Vision:** For New Zealand to be the most desirable source of food in the world based on agroecological crop protection practices.

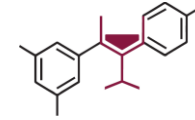
**Why:** To meet consumer demands for sustainably and ethically produced New Zealand plant-based products while protecting the environment.

**How:** By identifying and supporting new crop protection tools and integrating biological and ecological processes into food production.



A LIGHTER TOUCH

Ministry for Primary Industries  
Manatū Ahu Matua



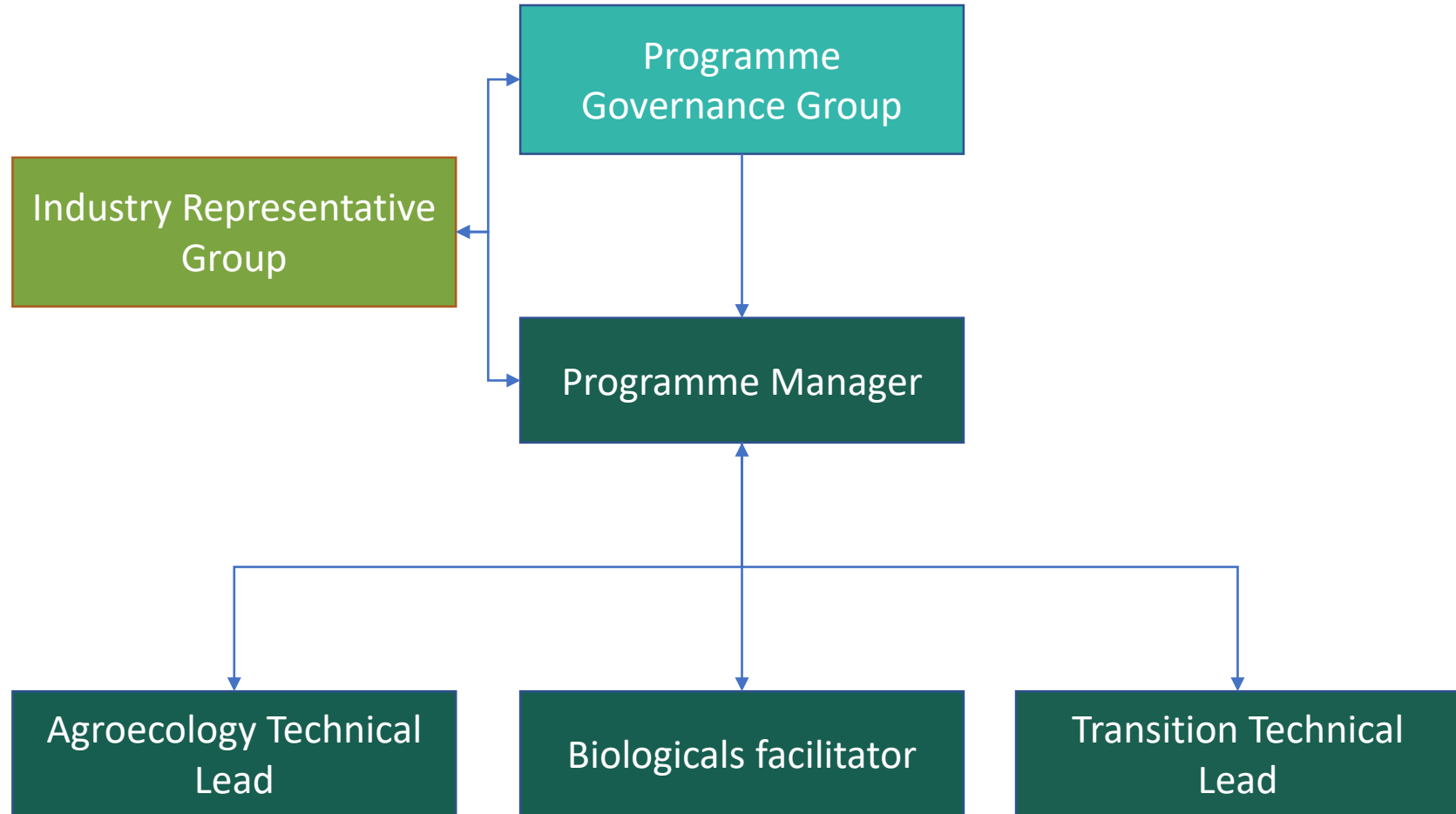
BRAGATO  
RESEARCH INSTITUTE  
RANGAHAU KAREPE, WĀINA O AOTEAROA





**A LIGHTER  
TOUCH**

# Programme management





## A LIGHTER TOUCH

**An integrated programme:** A Lighter Touch seeks to use the best technology available to shift the focus of crop protection, and integrate biological and ecological processes into food production – to achieve a lighter touch on the environment and meet consumer demands.



**A LIGHTER  
TOUCH**

# Programme themes

**Theme 1:** Future focus

**Theme 2:** Agroecological crop protection

**Theme 3:** Transition projects

**Theme 4:** Project management



**A LIGHTER  
TOUCH**

# Programme themes

**Theme 1: Future focus**

**Theme 2: Agroecological crop protection**

**Theme 3: Transition projects**

**Theme 4: Project management**



**A LIGHTER  
TOUCH**

## **Theme 2: Agroecological crop protection**

Project 4 – Scoping study

**Project 5 – Biopesticides path to market**

Project 6 – Upscaling biological control capability and adoption

Project 7 – New technologies for crop protection

Project 8 – Proof of concept

Project 9 – Extension focus





**A LIGHTER  
TOUCH**

# **Project 5 – Biopesticides path to market**

**Project milestones:**

**MS5.1:** upscaling the production and availability of biopesticides

**MS5.2:** demonstrate pathway to biopesticide registration

**MS5.3:** achieving increased use of biopesticides



**A LIGHTER  
TOUCH**

## **MS5.1: upscaling the production and availability of biopesticides**

- Identify candidate biopesticides for commercialisation;
- Match to industry gaps and priorities;
- Facilitate commercialisation activities.

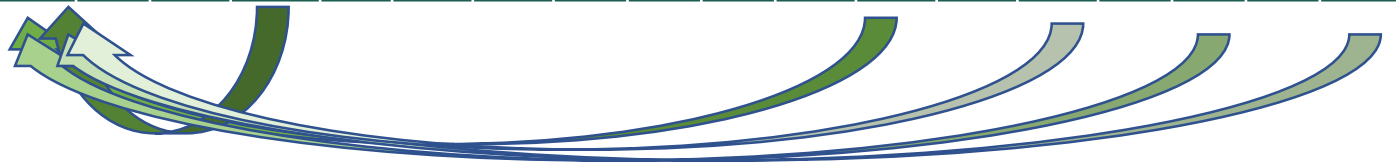


A LIGHTER TOUCH

# MS5.1: Match to industry gaps and priorities

Pest:	thrips	birds	whitefly	aphids	caterpillar	carpophilus	tree borer	slugs	Vege bug	nematodes	weevils	mites	flower moth	TPP	Onion fly	Grass grub	mealy bug	PVH	weta
Rank:	1	2	3	4	5	6	7	7	8	9	9	10	11	11	11	12	13	14	15

Disease:	bacterial	fusarium soil	anthracnose	botrytis	soil borne	sclerotinia	alternaria	brown rot	melanose	citrus scab	downy mildew	septoria	phytophthora	foliar fusarium	smut	mildew powdery	white rot	ripe rots	Violet root rot	gummy stem blight	rust
Rank:	1	2	3	4	4	5	6	7	8	9	9	10	10	10	11	12	12	12	12	13	13





**A LIGHTER  
TOUCH**

## **MS5.2: demonstrate pathway to biopesticide registration**

- Document the regulatory pathway;
- Work with registrants on case studies;
- Review the process with both registrants and regulators;
- Overcome regulatory impediments.



**A LIGHTER  
TOUCH**

## **MS5.3: achieving increased use of biopesticides**

- Plans for integration of biopesticides into CP programmes;
- Programme and approach with industry organisations;
- Ensure *A Lighter Touch* activities contribute to:
  - increased biopesticide adoption.



**A LIGHTER  
TOUCH**

# **Project 6 – Upscaling biological control capability**

## **Project milestones:**

- MS6.1:** Overcoming impediments of BCA production;  
Candidates for upscaling;
- MS6.2:** Enhanced agroecology projects;
- MS6.3:** New BCA's



**A LIGHTER  
TOUCH**

# Project 7 – New technologies for crop protection

- Review and evaluate available technologies;
- Investigate feasibility and effectiveness;
- Integrate new technologies into CP programmes.



**A LIGHTER  
TOUCH**

# Project 8 – Proof of concept

- Identify proof of concept projects:
  - Biopesticide, BCA, new technologies;
- Planning for integration into CP programmes.





**A LIGHTER  
TOUCH**

# Project 9 – Extension focus

- **MS9.1:** Model farms and focus groups;
- Establish fruit, vegetable, arable model systems;
- Demonstrate proof of concept;
- Extension & training plans with focus groups;
- Evaluate the rate of adoption of ACP.



**A LIGHTER  
TOUCH**

# Project 9 – Extension focus

- **MS9.2:** Information tools
- Define tool & content requirements;
- Develop tools for growers and other users.

# Programme website

[www.a-lighter-touch.co.nz](http://www.a-lighter-touch.co.nz)



## A LIGHTER TOUCH

